

Margaret Garrard

Freehand



1 Divide the bowl into sections with four rubber bands - the advantage of these is that you can move them around to get the perfect shape - draw a line in a soft pencil along the outside of the bands to divide the bowl into eight sections...



2 ... and then cut any design in the spaces. I have used mostly a clover shape, which I first outlined and then cut through. This method allowed me to fill the space easily and evenly. I have also stippled some of the design onto the lower part of the bowl exterior

Piercing bowls



1 I use a Presto handpiece originally designed for dental work. It utilises a compressed air turbine and runs at 380,000rpm. I mostly use a shortish straight burr for cutting out and a headed burr for stippling



2 The bowl can be left natural and finished as normal, as here, or coloured, but before applying any colour, sand the bowl to 1000 grit as sanding marks will show irreversibly through the colour

COLOURING



1 Here I am using an airbrush and Golden Transparent Air Brush paints; to maximise effect apply at least three complimentary or contrasting colours. You could, however, use aerosol paint or brush on a wood stain colour



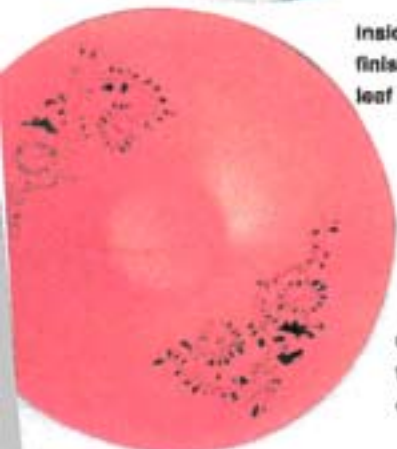
2 Varnish with five or six thin coats of gloss varnish and hang them up to dry between coats, wet-and-dry sanding very lightly with 1500-grit abrasive



Inside of the finished butterfly bowl



Inside of the finished flower bowl



Inside of the finished Japanese leaf bowl



Outside of the finished freehand design bowl

AVAILABILITY

Presto handpiece and burs available from **Profitable Hobbies**
Email: info@profitablehobbies.com
Golden transparent/opaque airbrush colours from: **Golden Paints**
Website: www.goldenpaints.com